



NYANDUNGU WETLAND ECO-PARK

GGGI TECHNICAL SUPPORT TO RWANDA MINISTRY OF ENVIRONMENT

In 2017, GGGI signed a contribution agreement with the Italian Ministry for Environment, Land and Sea (IMELS) to implement the MoU between MoE and IMELS.

The agreement kicked off in 2018 in April. The first technical support was directed towards the mobilization of additional resources to build urban resilience through rehabilitation of wetlands in the city. GGGI has provided technical support to the Ministry of Environment through its institution Rwanda Environment and Management Authority (REMA) to design and develop a project proposal to strengthen climate resilience of the City of Kigali. The resources mobilized were additional to the already mobilized funds from FONERWA. The project was approved and funded (EURO 1Million) by IMELS in May 2018. Works started in 2018 September

In December 2018, during the Africa Green Growth Forum, the then Director General Mr. Francesco La Camera representing IMELS visited the park and planted a tree (*Spathodea campanulata* – a native flowering tree) and named it "Francesca, a name after her daughter as he said) Rwanda to Build Ecotourism Park in Kigali | Inter Press Service (ipsnews.net)



Thanks to GGGI business model of embedding technical advisors within our government partner offices, GGGI has been engaged throughout the project development process starting with the Nyandungu masterplan development, design and Bill of Quantities review and validation technical workshops organized by REMA.

In 2018, During the steering committee meeting, PM Dr Brigitte Nyirambangutse presenting the agreement between GGGI & IMELS including the project in Nyandungu



In 2020 March, A workshop to review updated design and Bill of Quantities



CONTEXTUAL BACKGROUND

The wetland has suffered a lot of land uses changes over the years, including

- agricultural activities,
- pasturing, cattle farm,
- sand mining,
- wetland reclamation.

Due to minimal management and urbanization, the wetland was degraded and no longer capable of offering its ecosystem services such as provisioning and regulating. During the period of heavy rains, the land posed a flood-risk to the downstream areas.

The only remaining element was a channeled stream across the site. It also received polluted water including sewage outflow from surrounding areas.

The following pictures illustrate the state of vegetation,



Sector 1

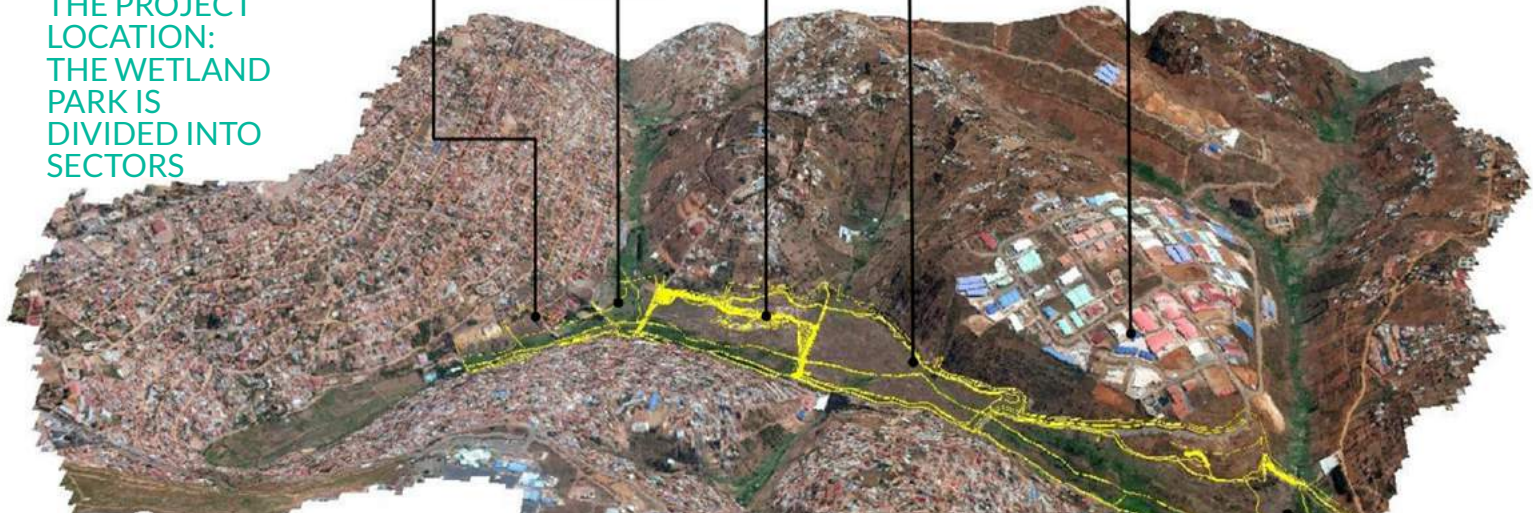
Sector 2

Sector 3

Sector 4

Free Trade Zone

THE PROJECT LOCATION: THE WETLAND PARK IS DIVIDED INTO SECTORS



PROJECT INFORMATION

- . Total length walkways-4080 m
- . Total length bicycle lanes-3955 m
- . Total number of ponds-8, catchment ponds-5, recreation ponds-3
- . Total area of parking-3115 m²
- . Total length of roads-1100 m²
- . Total area of medicinal garden-780 m²
- . Total area of pope's garden-525

Between late 2018 to 2021, different activities took place. The following pictures illustrates some of the many activities undertaken during the construction and the rehabilitation of the wetland. CREDIT: REMA

Drainage Channels: Constructed living machine/drainage channels will help capturing all rainwater coming from neighboring settlements



2018-2021

REFOREST: Planting trees (nursery preparation of native



Gabion construction, widening of the stream, and filtration of plants to allow the expansion of the wetland, and the filtration of water coming from the neighboring community



Water ponds: excavation and grass planting works of ponds to play an important role in flood risks management



MASTER PLAN- KEY FEATURES



GREEN INFRASTRUCTURE & SERVICES

Strategies to go for green energy, saving and recycling water, use of local and natural materials as well as architectural designs that maximize natural lighting and ventilation

ENERGY	WATER	STRUCTURES	ROADS
50% of solar Energy	Water harvesting	Maximize natural lighting and ventilation	Minimum vehicular Traffic limited to services and to parking area
Grid power is 100%	Water Efficient fittings	Natural Materials	Provision for Non Motorized Transport
Provision for 100% self dependence	Provision for Recycling		Use Natural materials



GGGI TEAM RWANDA VISITING THE WETLAND PARK AFTER COMPLETION



CREDIT: WILL WILSON



2022

The 121-ha urban wetland is now flourishing with fauna and flora. It provides walking/cycling trails, fishponds, and botanical gardens, restaurants, Information center etc. When you visit, the following is a glimpse of what you will see (several species of birds and wetland vegetation) CREDIT: REMA



CLIENT  **REMA**
OUR ENVIRONMENT OUR FUTURE

CONSULTANTS  **GASABO** 3D  **ASTRIK**
INTERNATIONAL

CONTRACTORS  **Afrilandscapes**

FINANCIAL SUPPORT: FONERWA and IMELS. GGGI provided technical support including resource mobilization



To learn more about our work, Please contact us:

GGGI in Rwanda

Project Manager GGGI-IMELS

Dr. Brigitte Nyirambangutse

Email: brigitte.nyirambangutse@gggi.org

Tel: +250785020854

To learn more about us:

Global Green Growth Institute

 www.gggi.org  [@gggi_rwanda](https://twitter.com/gggi_rwanda)

